



Portola and Castle Rock Foundation

Inspiring the Protection of Castle Rock and Portola Redwoods State Parks Through Quality Educational Experiences and Infrastructure Improvements

Every donation we receive counts. *Your donations enable us to do more for Castle Rock and Portola Redwoods State Parks. Our 2024 projects include funding new interpretive panels, trail improvements on the Tip Toe Falls trail in Portola Redwoods, as well as supporting a Portola Redwoods trail sign replacement project. We will continue to support improvements to the Portola Redwoods Visitor Center with plans to update the windows and repair the fireplace in 2024. These projects align with our mission and enhance the visitor experience at both parks. In addition, we will also support State Parks programs for volunteers and backpackers. All of our funding is possible because we receive generous donations from people like you, that share our passion for our local State Parks.*

Make your 2023 tax deductible donation now! *Long-time donors have agreed to donate \$2 for every \$1 donated (up to \$1,000) to Portola and Castle Rock Foundation. Please help us earn these matching funds by donating during the month of December.*

Help us do more - Donate *this month to Portola and Castle Rock Foundation. Send us a check, click on our website (portolaandcastlerockfound.org/donations/) or donate via the PayPal Giving Fund (paypal.com/us/fundraiser/charity/110027).*

With support from all *of our donors we can achieve our 2024 goals.*
Please donate today!

2023 Highlights

Portola Trail Crew

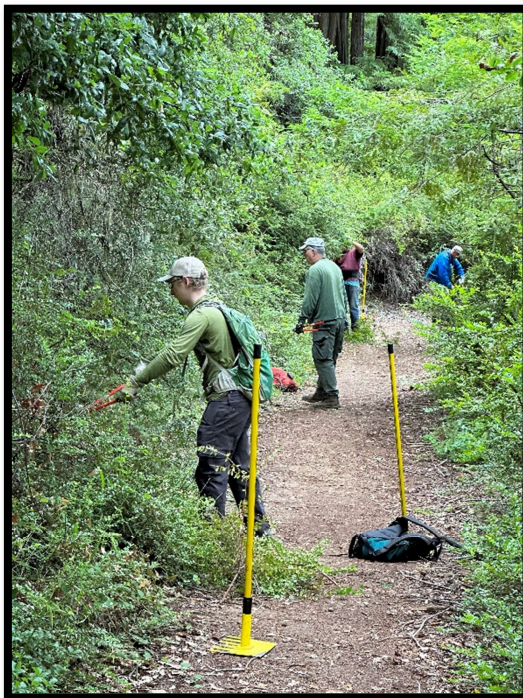
The trail crew at Portola Redwoods continued work this year on the Coyote Ridge Trail. If you look closely, you can just see the trail in the first image. The crew worked hard this year to clear the Coyote Ridge Trail. Then the crew moved to the Iverson Trail for some well-deserved maintenance.

Volunteers spent time every month making progress - it's amazing how much the steady monthly workdays have contributed to visitor enjoyment and the overall condition of Portola's trails.

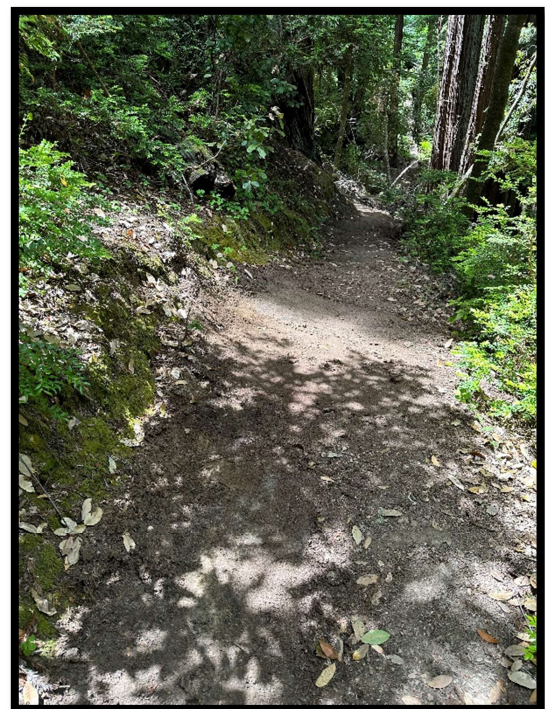


Iverson Trail

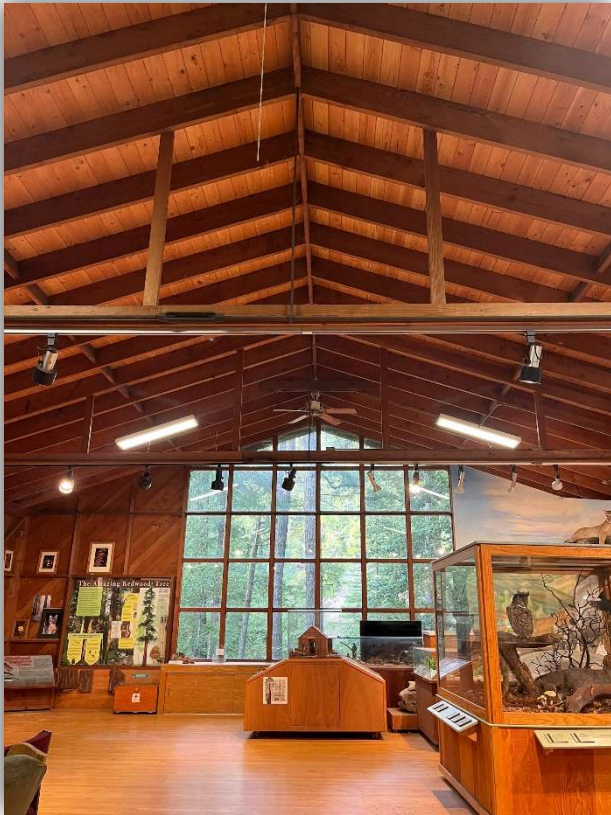
Learn more about the Portola Trail Crew or sign up to volunteer next month.
portolaandcastlerockfound.org/portola-trail-crew/



Coyote Ridge

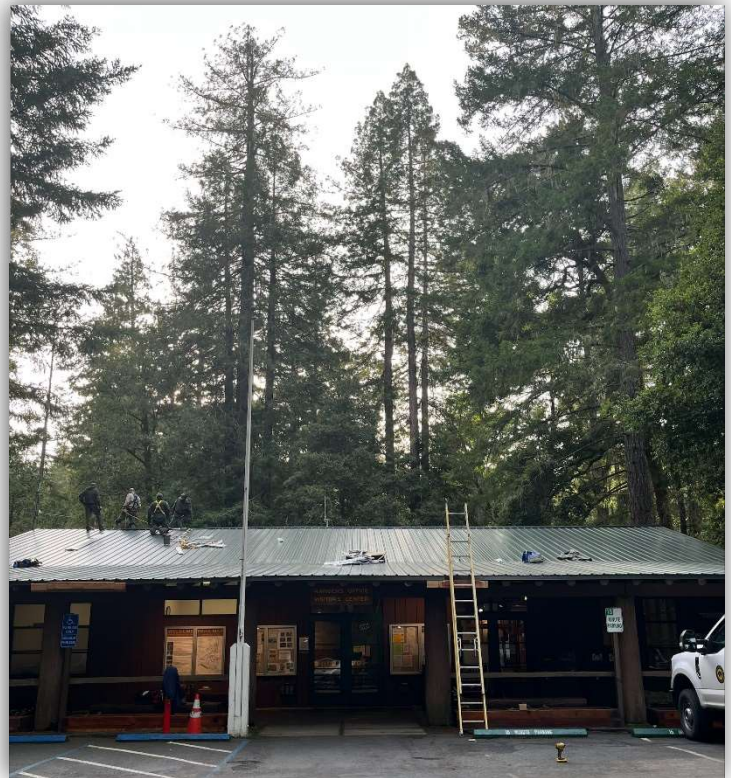


Portola Redwoods Visitor Center Roof Project



State Parks replaced the old wood shingle roof with a new metal roof and installed a Douglas Fir tongue and groove ceiling to replace the water stained plywood ceiling. Plans in 2024 include updates to the windows, repairs to the fireplace and exterior work to improve structural integrity and fire resiliency.

To view more of the images we captured during this project, check out our SmugMug account at:



portolaandcastlerockfound.smugmug.com/New-PCRF-Photos-2023/Portola-Photos/VC-Project/.

2023 Used Gear Drive

Portola and Castle Rock Foundation partnered with multiple REI stores in the Bay Area to sponsor a new and gently used gear drive for Bay Area Wilderness Training (<https://www.bawt.org/>). BAWT has a gear library and lends its camping gear out to groups who have big and little adventures planned, focusing on enabling under represented and under served youth to have outdoor experiences. Thank you to everyone the dropped off donations at local REI stores.

Castle Rock Trail Sign Project

In 2023, State Parks began replacing trail markers and other important Park signs within Castle Rock State Park. PCRf assisted with funding the purchase of redwood posts in 2022 and metal trail signs in 2023. This project was possible because of generous donations we received from members and donors.

Perseids Show at Castle Rock

For the second year in a row, Portola and Castle Rock Foundation hosted a meteor viewing party in the parking lot at Castle Rock. The Perseids meteor shower takes place annually in August. Unfortunately, the shooting stars were not cooperating, but there were a few SPECTACULAR fireballs to keep people engaged. We plan to host this event annually.

Portola Redwoods Utility Shed

PCRf and Parks installed a new maintenance shed at Portola Redwoods in 2023. The Portola Trail Crew now has a safe, dry space to store tools! The shed will be used to store tools, equipment and signs used within the Park. This project was possible because of generous donations we received from members and donors.

Our Mission

Inspire Protection of Castle Rock and Portola Redwoods State Parks through Quality Educational Experiences and Infrastructure Improvements